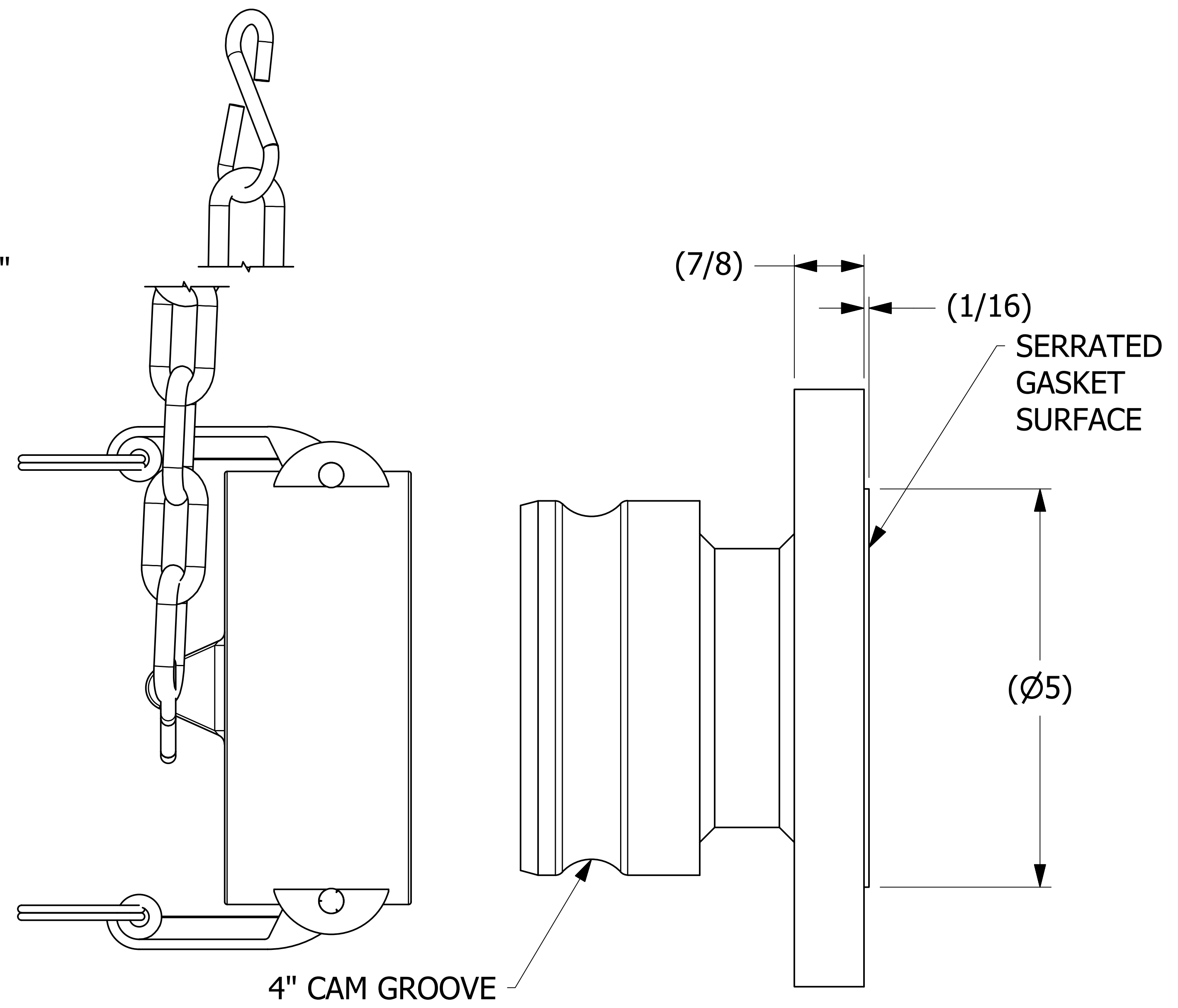
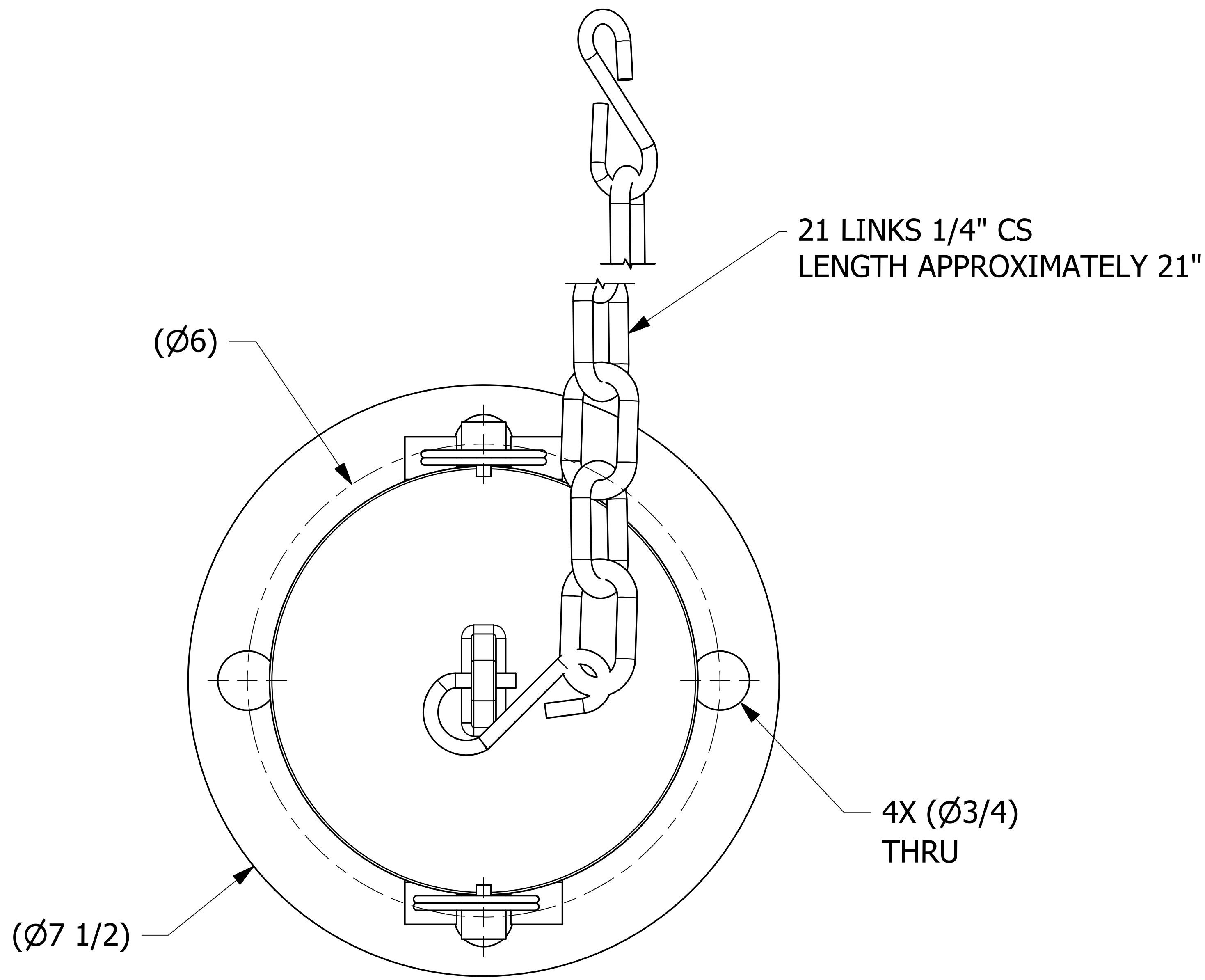


SALES DRAWING SALES DRAWING SALES DRAWING SALES DRAWING

SALES DRAWING SALES DRAWING SALES DRAWING SALES DRAWING



- NOTES:**
1. APPROXIMATE HEIGHT=5 1/2"
 2. QUICK DISCONNECT MEETS A-A-59326D.
 3. GASKET MATERIAL IS BLACK CAROLINA SEAL 4273B.

UNLESS OTHERWISE SPECIFIED DIMENSIONAL TOLERANCES FRACTIONAL: ±1/16 X.XX: ±.03 X.XXX: ±.015 ANGULAR: ±1° DEBURR ALL SHARP EDGES. ALL MACHINED SURFACES TO HAVE A 125 RMS FINISH UNLESS NOTED OTHERWISE. THIRD ANGLE PROJECTION	DRAWN BY:	JG
	CHECKED BY:	CHL
	PROTOTYPE DATE:	6/2/2014
	APPROVED FOR PRODUCTION BY:	CHL
	PRODUCTION DATE:	6/5/2014
	SIZE:	D
DRAWING #:	39164	

D	WEB	3/26/20	202003261534	WEB
REV	BY	DATE	REF #	PUB
SALCO PRODUCTS, INC.				
PART NAME: TOP FITTINGS ASSEMBLY 4"X3" FLANGED				
MATERIAL: CARBON STEEL				
PROJECT #: 140313			SHEET #: 1 OF 1	SCALE: 1:1
PART #: K30X40CS150F218A				